

# Y2L Laboratory History



Y2L Manager  
Kang, WoonGu

2023.09.16

# Laboratory History

2

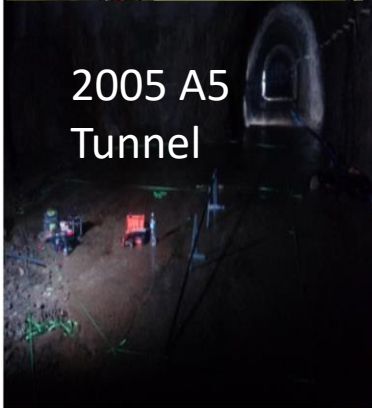
2000  
청평실험실



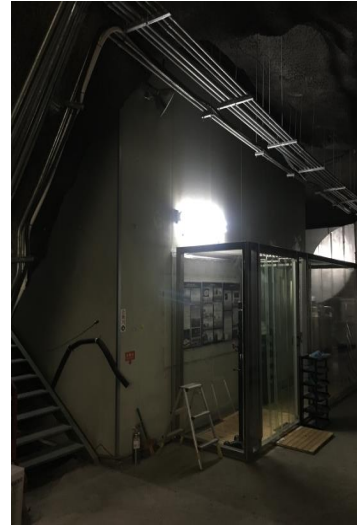
2003~2012  
A6 Laboratory



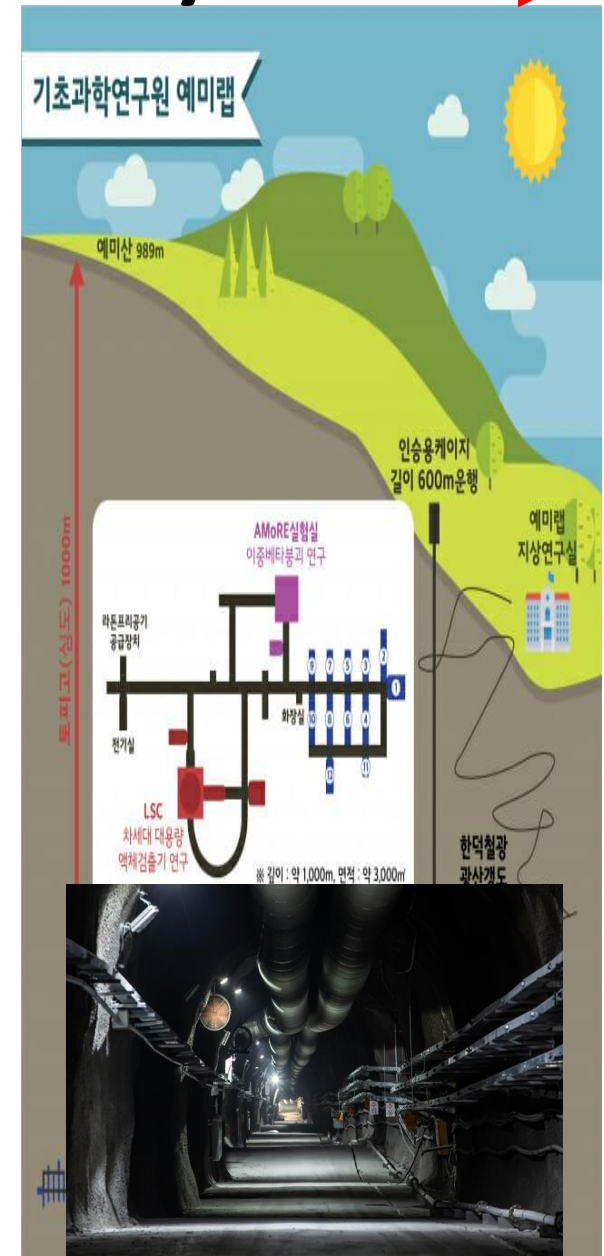
2005 A5  
Tunnel



2013~현재  
A6 Laboratory

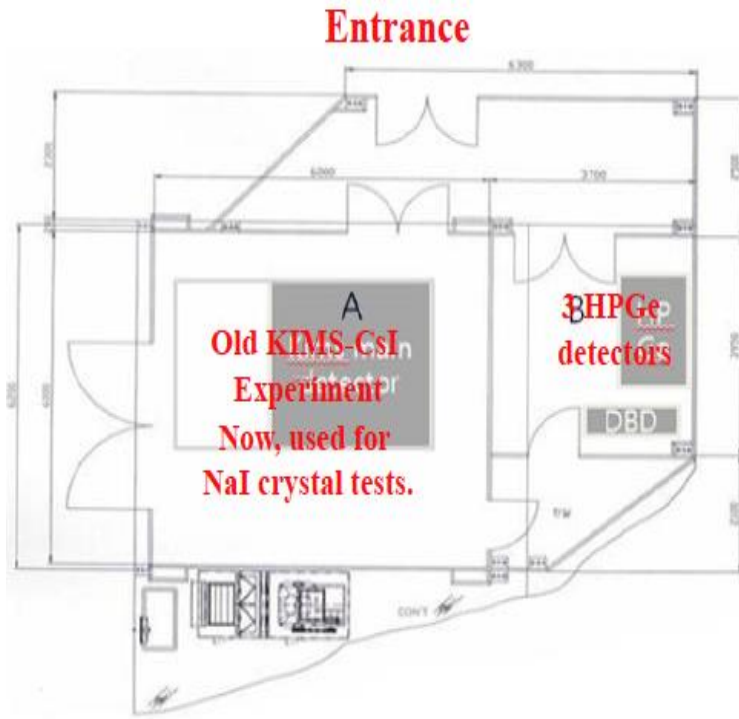


A5 Laboratory



# A6 Laboratory history

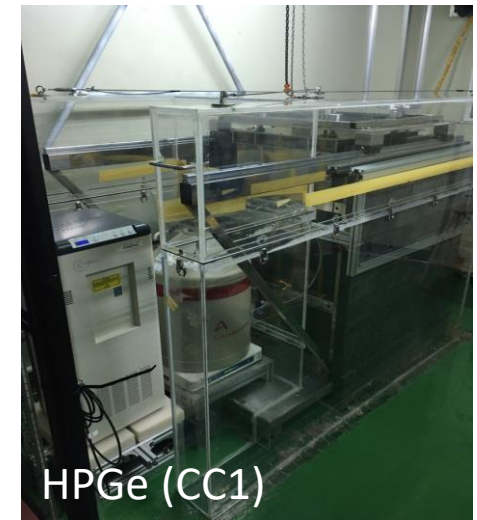
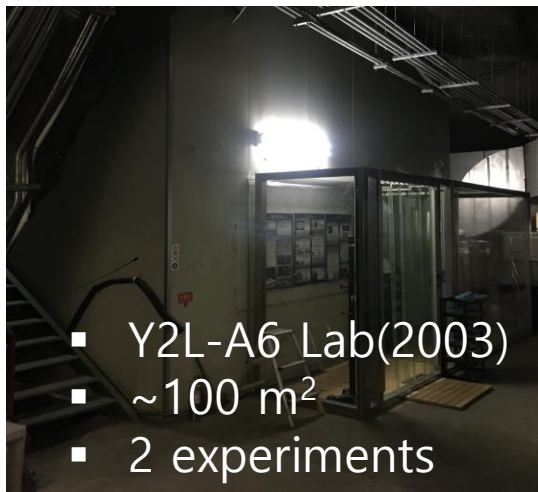
3



AS NaI1308



AS NaI1312

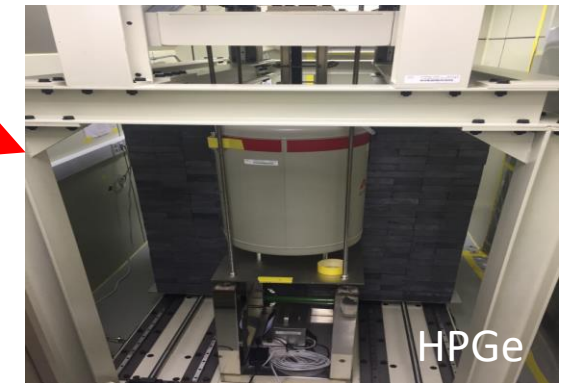
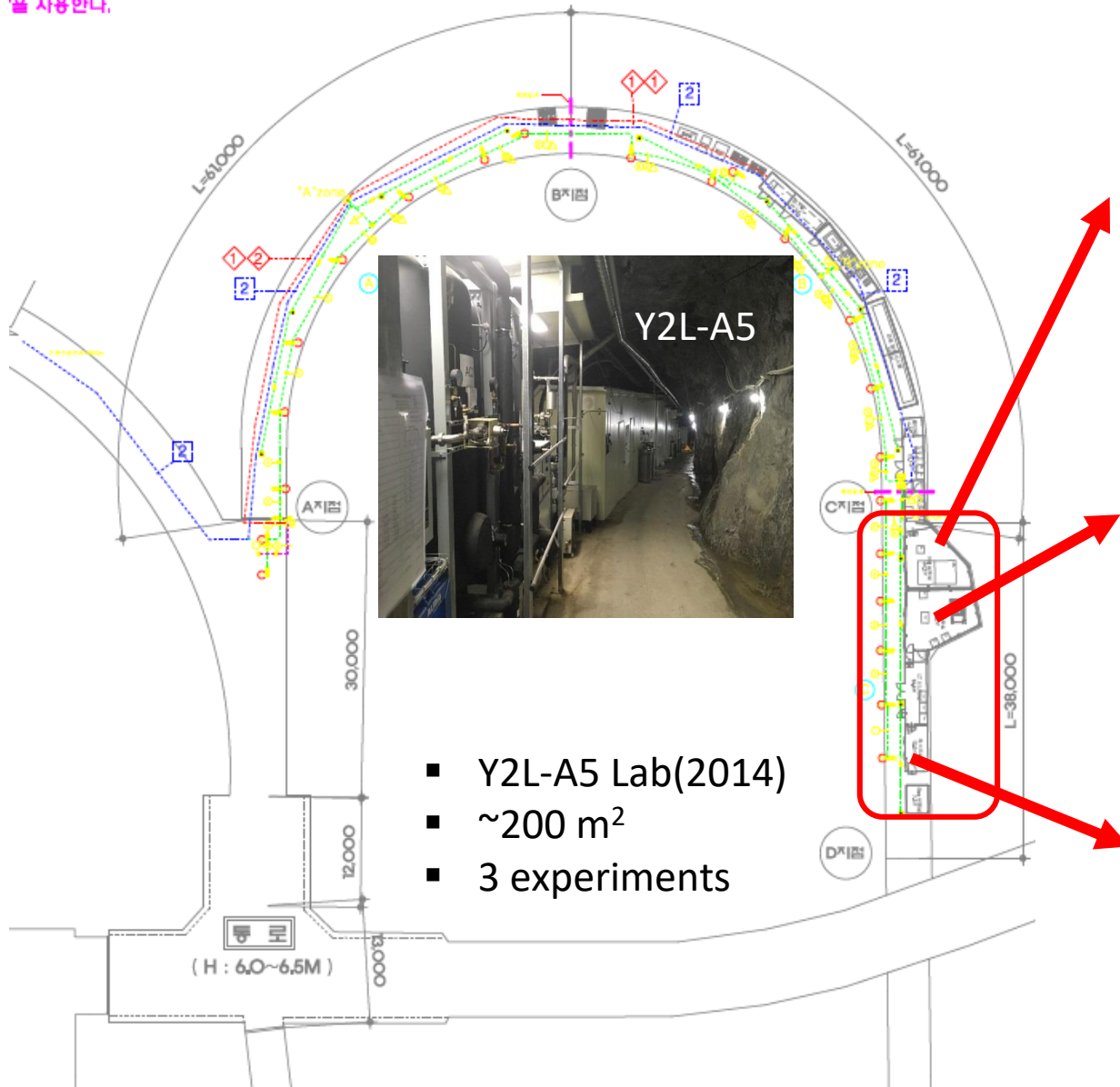


LN2 → up to 8 litres per day

KIMS 검출기 와 HPGe 검출기

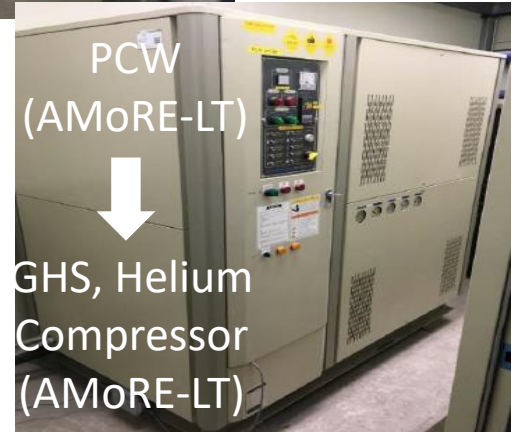
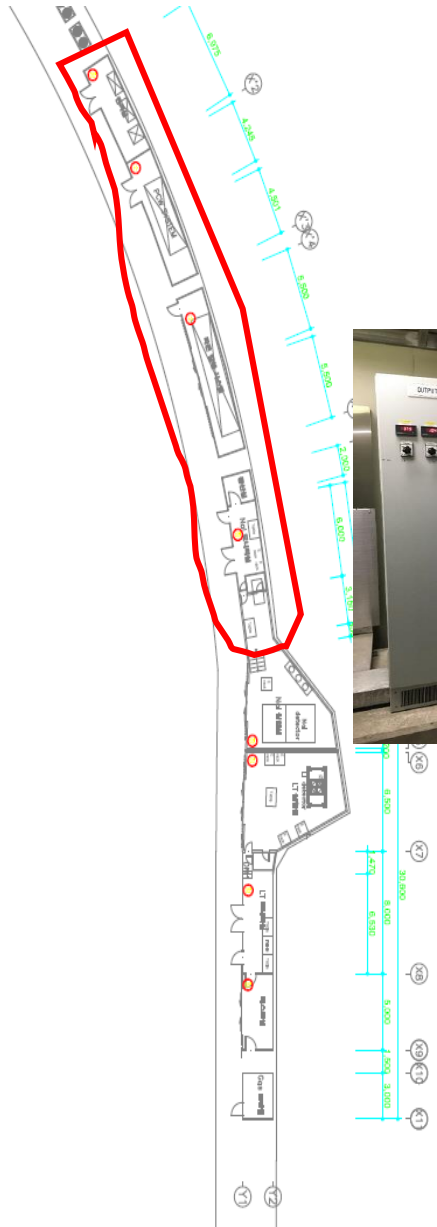
# A5 Laboratory history

새 사용안나.



# A5 Facility

5



# Preparing to move to YemiLab

Thank you !